



**MARK
JANICELLO**

**THE
WORKS**
A RETROSPECTIVE

A man with short dark hair, wearing a white button-down shirt, is sitting in front of three large abstract paintings. The paintings are vertical and feature bold, expressive brushstrokes in green, red, and blue. The man is looking directly at the camera with a slight smile. The background is a dark, textured wall.

**All paintings Copyright Mark Janicello.
Reproduced with permission.**

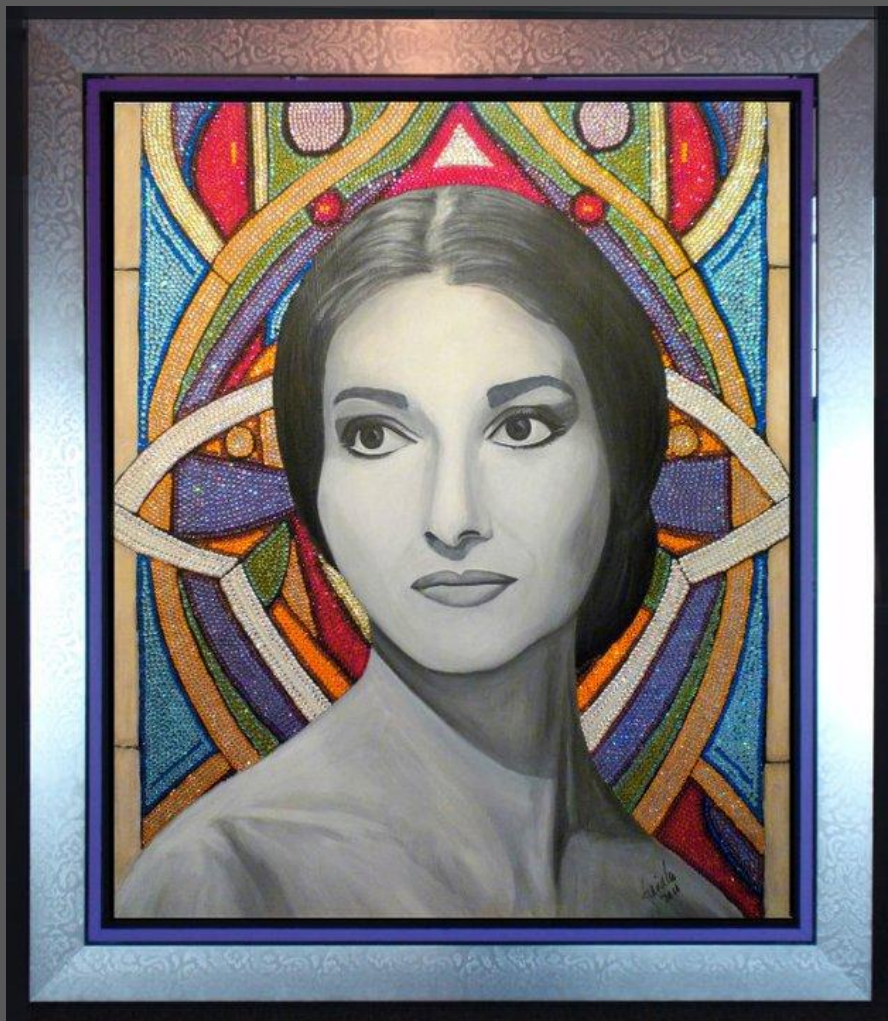
**All paintings are available for purchase
either as an Original or as a museum-quality,
numbered limited-edition Giclee.**

**All paintings and Giclees are delivered with a signed
Certificate of Authenticity.**

**For prices, painting sizes and other information:
mark@markjanicello.org**

"Crystal Maria"

2011 - Acrylic on Linen
With 13,000 Genuine
Swarovski Crystals





“Blue Ridge Springtime”
2021 – Acrylic on Linen



"Magnolia River"
2021 - Acrylic on Linen



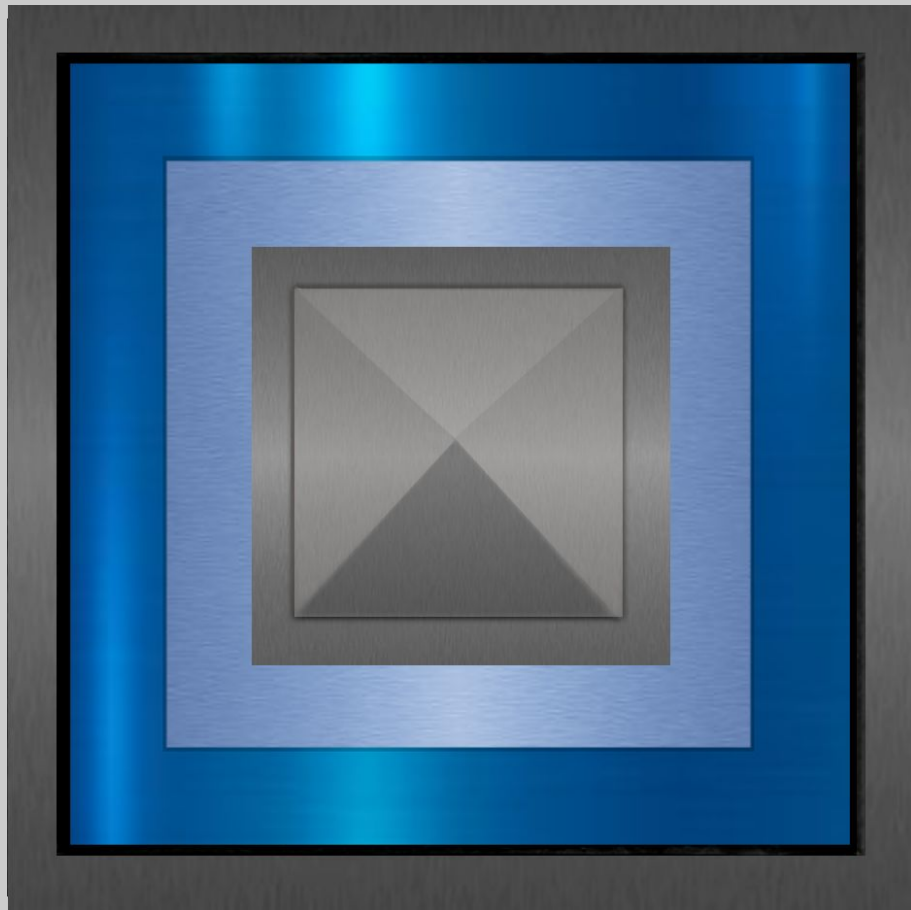
“Poppy Field”
2021 - Acrylic on Linen



“Bloemveld”
2008 - Acrylic on Linen



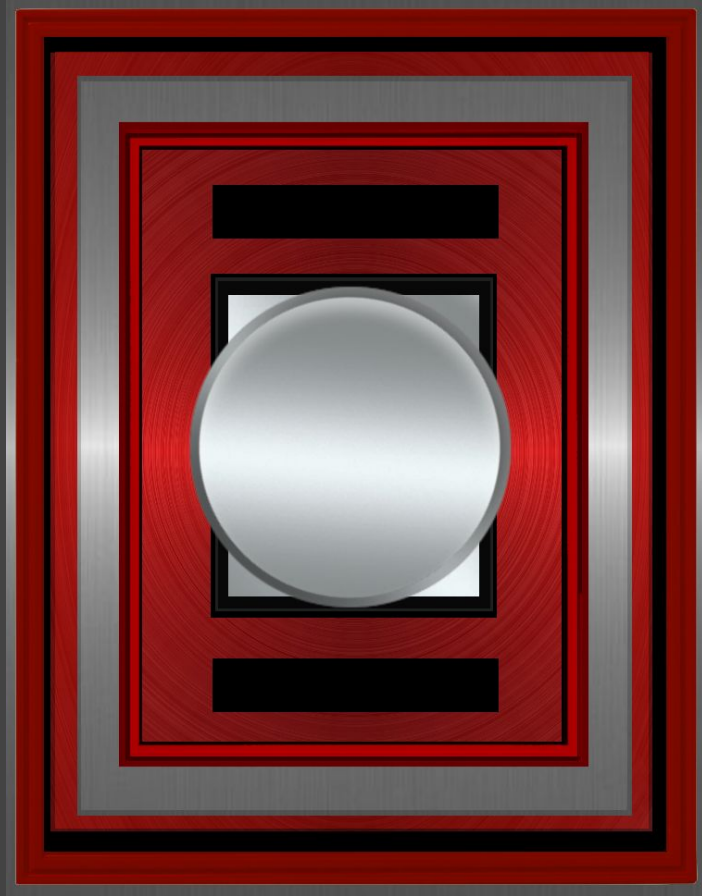
"Sunset Dream"
2012 - Acrylic on Linen



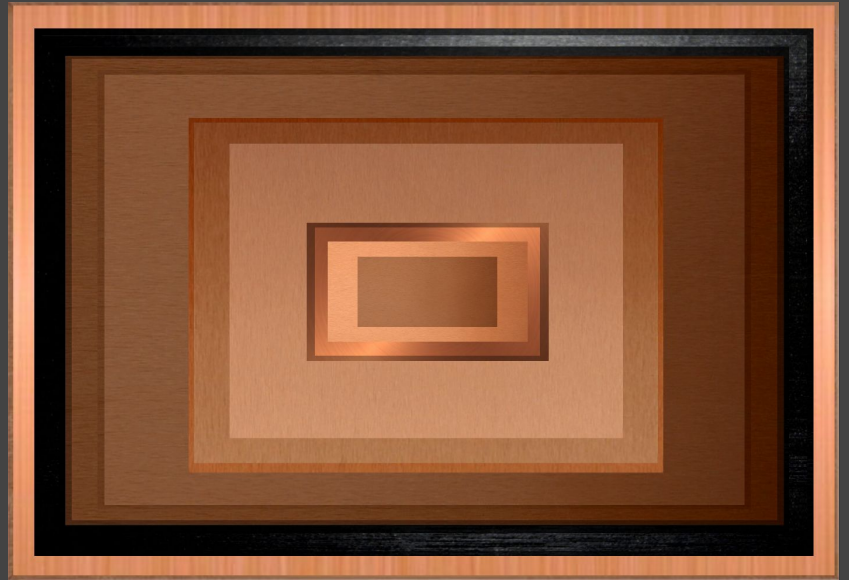
"Symmetry 2 - Obelisk"
2020 - Brushed Aluminum and Linen



"The Eyes Have It ," 2020
Acrylic on wood-mounted mirror with neon lighting



"Symmetry"
2020 - Brushed Aluminum on Linen



"Symmetry Copper"
2020 - Brushed Aluminum on Linen



“Liquid Rainbow”
2020 - Acrylic and Liquid Epoxy on Linen
with a “flying” Antique Frame



“Le Voyage Inconnu”
2008 - Acrylic on Linen



"Ausnahmezustand"
2019 - Acrylic on Linen



"Box Set"
2010 - Acrylic and wood on Linen



"Bloemveld 2"
2008 - Acrylic and wood on Linen



"Cactus Flower"
2010 - Acrylic on Linen



"Blue Orchid"
2008 - Acrylic and wood on Linen



“Electric Traffic”
2010 - Acrylic on Linen in an Antique Frame
with CCFL Lighting Elements



“Ho-Jo-To-UFO”
2011 - Acrylic and Liquid Epoxy on Linen
in an Antique Window Frame with LED Lighting



"Fashion Victim"
2019 - Acrylic on Linen



"The King Laughs"
2011 - Acrylic Giclee with Liquid Epoxy on Linen

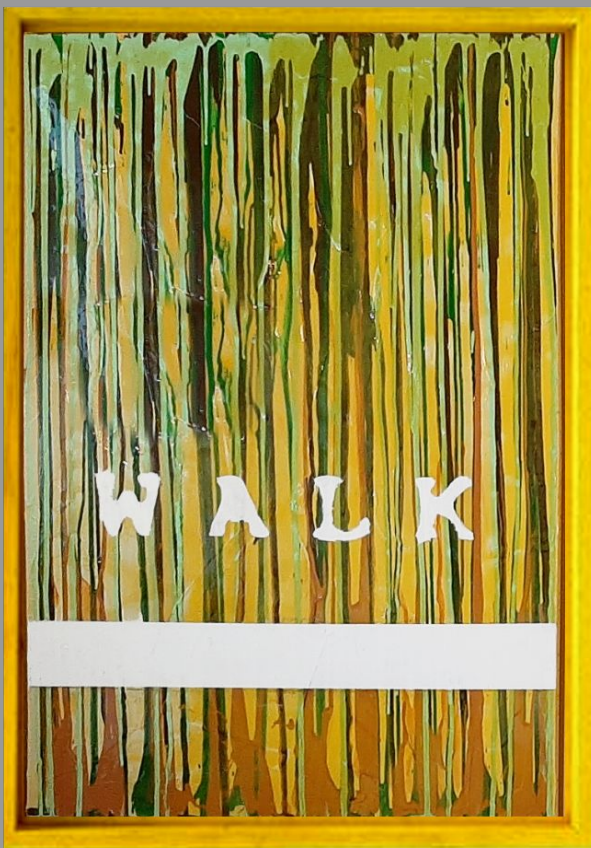


"Fire Music"
2010 - Acrylic and
Liquid Epoxy on Linen

Mounted on an
Fire-Burnt Solid Oak Door



"Fire Music"
Close-up before Liquid Epoxy
was applied to the painting



"Walk This Way"
2012 - Acrylic and Liquid Epoxy on Linen



"I Must Learn To Lose Control"
2012 - Acrylic and Pencil on Linen



"The River"
2004 - Acrylic on Linen



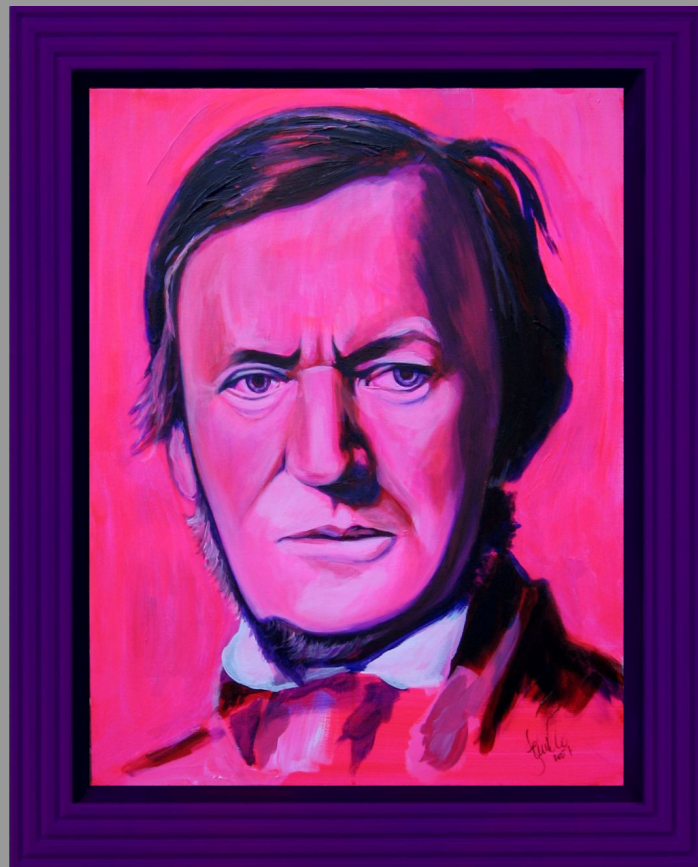
"Multi-Tulip"
2015 - Giclee on Linen



"Window Box"
2020 - Acrylic on Linen



"Louis"
2013 - Acrylic on Linen



"Der Meister"
2008 - Giclee on Linen with Liquid Epoxy



"Mario Mio"
2010 - Acrylic on Linen



"The Queen Laughs"
2008 - Acrylic on Linen



"Hemelblauw"
2010 - Acrylic on Linen



"Diagonal Gold"
2010 - Acrylic on Linen



"Diagonal White"
2010 - Acrylic on Linen



"Family Portrait"
2009 - Acrylic on Linen



"Multi-Elvis"
2013 - Giclee on Linen



"Good Luck"
2013 - Acrylic and Spray Paint on Linen